



# Neco 50cc EURO4 Owner Manual

operating instructions  
warranty instructions



Warranty Registration



**DEAR CLIENT,**  
Thank you for choosing our brand!  
In order to fully enjoy your new bike, we ask you to activate your 2-year warranty.

**REGISTER THE WARRANTY OF YOUR BIKE**  
In order to activate the warranty on your bike you need to register the unit first. This must be done immediately after your purchase. The purchase date will be the same as the initial start of the warranty. **UNITS THAT ARE NOT REGISTERED NOT BE COVERED UNDER THE MANUFACTURERS WARRANTY**

Your Neco Scooter is covered by a 2 year warranty. All further information regarding the general applications and ruling regarding this warranty are indicated in the users manual.

**HOW TO REGISTER ?**  
1) Make sure to have a digital version of the invoice (jpg or pdf) and the VIN number of your vehicle.  
2) Visit **neco.be** , follow the instructions indicated under '**register your vehicle**'.

**Why is this registration important ?**  
- It helps your local dealer to order new spare parts in case of warranty claim.  
- You will be automatically advised of new updates.  
- If your bike is stolen, the Police can contact us if found and we can then help to return the bike to the correct owner.



The QR code leads you directly to the registrationform Neco:  
[registration.mooof.eu/en/neco](https://registration.mooof.eu/en/neco)



Table of contents

Warranty Registration .....2  
Table of contents .....3  
Warranty Definition .....4  
Mooof warranty certificate: copy to be returned to MOOOF NV.....5  
Mooof warranty certificate: copy for DEALER .....7  
Mooof warranty certificate: copy for OWNER.....9  
Warranty Conditions .....10  
Delivery schedule : .....12  
Delivered in accordance with regulation .....13  
Maintenance Schedule .....14  
Precautions .....18  
Motorcycle Vehicle Identification Number (VIN) and Engine Number .....19  
Brief Introduction to the Whole Motorcycle.....20  
Brief Introduction to the Whole Motorcycle.....21  
Brief Introduction to the Whole Motorcycle.....22  
Technical Specifications and Performance Parameters.....23  
Instrument Combination.....24  
Left combination switch .....26  
Right combination switch .....27  
Ignition lock switch .....28  
Fuel tank .....29  
Maneuvering positions .....31  
Motorcycle Load .....32  
Tools delivered together with the motorcycle.....32  
Check before and after running.....33  
Check before running.....34  
Operation of foot-stepped startup.....36  
Operation of Electric Startup .....37  
Left combination switch .....39  
Parking of the Motorcycle.....40

## Warranty Definition

Definition and general clauses regarding the warranty

### 1. Introduction

Following the European consumer rules , you enjoy a legal warranty provided by the sales agreement between merchant and buyer (private users ) . This warranty does not affect nor diminishes the rights granted to the buyer.

This warranty only affects each products that are legally imported from MOOOF NV, within the European Community and are being sold again within the same European market through official Neco dealers.

### 2. Warranty Period

The legal warranty provided on all newly purchased Neco vehicles, is a term of two years, from the purchase date with a maximum mileage limit of 10.000 km.

### 3. Warranty terms

The warranty starts from the date of purchase mentioned on the invoice provided by your Neco dealer. The dealer will provide you with a warranty document when picking up the Neco.

### 4. Exclusion of warranty

MOOOF NV will refuse the intervention of warranty if:

- When the vehicle has been repaired/modified with spare parts other than the ones provided by MOOOF NV
- The owner/user didn't respect the periodic maintenance and repairs mentioned in the manual.
- The owner/user didn't use the motorcycle properly.
- The warranty period and/or mileage has expired.
- The dealer nor the owner can provide proof of evidence in order for MOOOF NV to accept the warranty.

## Mooof warranty certificate: copy to be returned to MOOOF NV

Model:

Frame N°:

Color:

Delivery date (dd/mm/yyyy):

License plate:

Name: .....

Address: .....

Zip code: .....

State/Province: .....

Country:.....

I have taken note of the warranty conditions and buyer responsibilities and the instruction manual. I have received the vehicle in accordance with locally applicable legislation.

signature client:

dealer signature & dealer stamp:

Provide  
postage  
stamp  
here

Mooof NV  
Rijksweg 440  
8710 Wielsbeke

Mooof warranty certificate: copy for DEALER

Model: Frame N°:  
Color: Delivery date (dd/mm/yyyy):  
License plate:

Name: .....  
Address: .....  
Zip code: .....  
State/Province: .....  
Country:.....

I have taken note of the warranty conditions and buyer responsibilities and the instruction manual. I have received the vehicle in accordance with locally applicable legislation.

signature client:

dealer signature & dealer stamp:

**Mooof warranty certificate: copy for OWNER**

Model:

Frame N°:

Color:

Delivery date (dd/mm/yyyy):

License plate:

Name: .....

Address: .....

Zip code: .....

State/Province: .....

Country: .....

I have taken note of the warranty conditions and buyer responsibilities page 10 tern 15 and the instruction manual. I have received the vehicle in accordance with locally applicable legislation.

signature client:

dealer signature &amp; dealer stamp:

## Warranty Conditions

Mooof nv congratulates you with your new purchase and thanks you for the confidence in our products.

This warranty certificate must be carefully read and then correctly filled in and submitted within 10 days after the purchase. Then the warranty period of 24 months after purchase goes into effect. A vehicle without complete completion and signing of the warranty book is excluded from warranty. The vehicle must be serviced by your Mooof dealer for the first 24 months in accordance with the maintenance schedule. When selling your vehicle, you must hand over the warranty certificate to the new owner.

All warranty claims must be sent (by the official Mooof dealer) with the parts for assessment to:

Mooof nv  
Rijksweg 440  
8710 Wielsbeke

### BUYER RESPONSABILITIES:

- The buyer is responsible for proper maintenance according to the maintenance schedule by an official Mooof dealer.
- Checking and maintaining standard liquid levels and lubricants.
- One must not drive with a defective and / or worn part causing more damage.
- Ensure that the vehicle does not run faster than the permitted construction speed.
- Checking VIN and frame number.

- Check whether the identification plate is present and matches the COC.
- The correct use of the vehicle according to regulations.

### 1. Definitions in these warranty conditions:

- Bullit / Neco : Mooof Benelux
- Dealer: An official Mooof concessionaire
- Customer: Any natural or legal person who purchases a product from the dealer or legal successor of that natural or legal person.
- Product: The vehicle as further described in (the copy of) the attached warranty registration card.
- Delivery: The delivery by the dealer to the customer. Delivery of the product in a new and unused at that time.
- Producer / Manufacturer: the producer / manufacturer of Bullit or Neco scooters and motorbikes.

### 2. Warranty:

Mooof guarantees that if the product exhibits material and / or construction defects for 2 years after delivery, Mooof will repair these errors (or have them repaired) provided the customer has always and comprehensively fulfilled all obligations and regulations as described below and insofar as the guarantee is not hereafter limited or excluded. The guarantee states that parts that, in the reasonable opinion of Mooof, exhibit material and / or construction defects are replaced or repaired free of charge at the discretion of Mooof.

### 3. The warranty period stated in Article 2 will not be extended after repair and / or replacement under the guarantee.

### 4. The customer must report material and / or construction er-

**rors to the dealer within a reasonable period of time after discovering the error.**

**5. Repair and / or replacement work under the warranty may only be carried out by the dealer or Mooof and only by using original Mooof parts, under penalty of expiration of the warranty.** If the repair or replacement is carried out before Mooof has confirmed in writing that repair or replacement is covered by the warranty, the customer will be responsible for the costs the costs associated with the repair or replacement by the dealer.

### 6. Excluded from warranty:

- tires, spark plugs, light bulbs, batteries, friction materials, chains, coolant, lubricants
- defects that are not material and / or construction faults, such as defects as a result of normal wear and tear, internal and external contamination, rust and paint damage, transport, freezing, overheating, overloading and / or dropping of the product.

### 7. No guarantee is available if:

- the completely filled-in warranty registration card is not returned by the buyer to Mooof within 10 days after delivery
- if the product has been repaired, modified, adjusted and / or taken in maintenance by someone other than the dealer or Mooof
- the product does not consist of original Mooof parts or parts that are explicitly known by Mooof
- the customer upon discovering the material and / or construction fault has not done everything reasonably possible to limit the damage
- other fuels and lubricants than those specified in the instruction

manual have been used

- the product is not in accordance with the regulations as described in the instruction booklet, or otherwise carelessly used.
- the maintenance of the product is not carried out in time, as described in the instruction booklet, by the dealer. With the aid of the attached service card, which has to be stamped by the dealer each time, timely maintenance must be demonstrated.
- The product has been used for competition purposes, competitions, performance rides or rental
- The product has been developed for competition use.
- In the request for repair or replacement under the warranty incorrect and / or incomplete information has been provided.

**8. If Mooof has repaired material and / or construction defects in accordance with these warranty conditions, Mooof will be fully discharged in respect of its warranty obligations and Mooof or the manufacturer will not be obliged to pay any further (damage) compensation, unless the customer proves that damage is caused by intent or gross negligence on the part of Mooof, the manufacturer or their managerial staff, or the customer proves that liability arises from Title 3 Section 3 Book 6 of the Belgian Civil Code.**

Nor can the customer demand dissolution of the purchase agreement based on material and / or construction defects found, unless the buyer can not reasonably be expected to maintain the purchase agreement.

**Delivery schedule :**

1 to 20 indicate “OK” or “n/a” (not applicable)

- 1. Cleaning ..... ok: ☐ .....n/a: ☐
- 2. Mount the battery ..... ok: ☐ .....n/a: ☐
- 3. Mixed oil level..... ok: ☐ .....n/a: ☐
- 4. Coolant level for LC..... ok: ☐ .....n/a: ☐
- 5. Brake oil level ..... ok: ☐ .....n/a: ☐
- 6. Test brakes ..... ok: ☐ .....n/a: ☐
- 7. Grip handles ..... ok: ☐ .....n/a: ☐
- 8. Wheel nuts..... ok: ☐ .....n/a: ☐
- 9. Tire pressure..... ok: ☐ .....n/a: ☐
- 10. Lubricate rotating parts ..... ok: ☐ .....n/a: ☐
- 11. Checking lighting ..... ok: ☐ .....n/a: ☐
- 12. Checking indicator lights ..... ok: ☐ .....n/a: ☐
- 13. Checking the running engine ..... ok: ☐ .....n/a: ☐
- 14. Cold start ..... ok: ☐ .....n/a: ☐
- 15. Brake operation ..... ok: ☐ .....n/a: ☐
- 16. Test drive ..... ok: ☐ .....n/a: ☐
- 17. Warm start ..... ok: ☐ .....n/a: ☐
- 18. Check speed ..... ok: ☐ .....n/a: ☐
- 19. Check whether the identification plate type is present ..... ok: ☐ .....n/a: ☐
- 20. Overall functionality ..... ok: ☐ .....n/a: ☐

**Delivered in accordance with regulation**

Date: .....

Name: .....

Mechanic: .....

Signature: .....

Dealer stamp:

Maintenance Schedule

<div>1st service: 500 km/3months</div> <div>DEALER STAMP</div> <div>mileage:                      date:</div>	<div>2nd service: 2000 km/12months</div> <div>DEALER STAMP</div> <div>mileage:                      date:</div>
<div>3d service: 4000 km/12months</div> <div>DEALER STAMP</div> <div>mileage:                      date:</div>	<div>4th service: 6000 km/12months</div> <div>DEALER STAMP</div> <div>mileage:                      date:</div>

Maintenance Schedule

<div>5th service: 8000 km/12months</div> <div>DEALER STAMP</div> <div>mileage:                      date:</div>	<div>6th service: 10 000 km/12months</div> <div>DEALER STAMP</div> <div>mileage:                      date:</div>
<div>7th service: 12000 km/12months</div> <div>DEALER STAMP</div> <div>mileage:                      date:</div>	<div>8th service: 14000 km/12months</div> <div>DEALER STAMP</div> <div>mileage:                      date:</div>



Maintenance Schedule

<div>9th service: 16000 km/12months</div> <div>DEALER STAMP</div> <div>mileage:                      date:</div>	<div>10th service: 18000 km/12months</div> <div>DEALER STAMP</div> <div>mileage:                      date:</div>
<div>11th service: 20000 km/12months</div> <div>DEALER STAMP</div> <div>mileage:                      date:</div>	<div>12th service: 22000 km/12months</div> <div>DEALER STAMP</div> <div>mileage:                      date:</div>

## Precautions

**Please read this User's Manual carefully before operating this product!**

### Warning

- \* Please observe traffic laws and regulations carefully and drive safely.
- \* Make sure not to lend this motorcycle to be driven by a person not holding a driver's license.
- \* Make sure not to hang anything on the direction handgrip, otherwise the driving safety may be affected.
- \* Please wear your protective articles such as helmet, dust goggles, gloves for the sake of your safety.
- \* Make sure not to use this model to participate in any kind of competition. Otherwise, any mechanical breakdown, injury or death arising wherefrom shall be on your own account.
- \* The temperature of exhaust silencer is high when the motorcycle is running. Drivers shall be careful not to touch it to burn them.
- \* Don't wear loose clothes or slippers when driving it. Otherwise, it may hook the control grip and accessories, and thus cause potential safety hazards.

### Caution

- \* After opening the packaging box, please check the accessories and various documents delivered with the motorcycle according to the packing list.
- \* The motorcycle accommodates two persons, and the maximum payload is 150kg. The moped accommodates 1 person, and the maximum payload is 75kg.

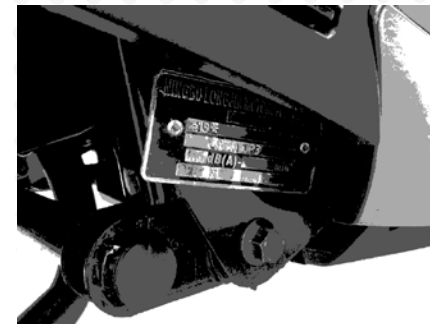
- \* It is not allowed to modify any part of the motorcycle. Otherwise, the reliability, stability and comfortableness of the motorcycle may be affected.
- \* Only the fuel with a grade specified on the fuel tank or above can be used. Otherwise, the dynamic performance, economy, and safety of the motorcycle may be damaged, and the service life of the motorcycle will be shortened. If any mechanical breakdown occurs due to this, you shall be solely responsible for it.

### Suggestion

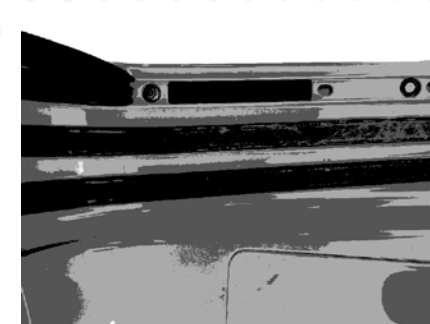
- \* This Manual is a necessity for the use of the motorcycle. If the motorcycle is transferred to any other person, this Manual should be transferred together with the motorcycle.
- \* When it is necessary to adjust the air valve clearance of the motorcycle, please do it in a professional motorcycle maintenance shop or in a designated after-sales service center.

## Motorcycle Vehicle Identification Number (VIN) and Engine Number

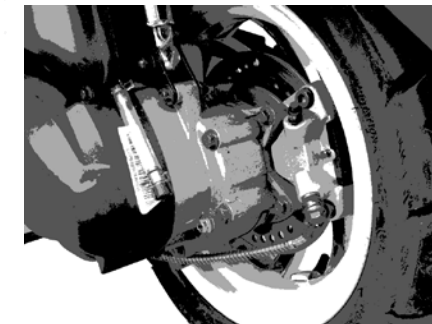
Motorcycle Vehicle Identification Number (VIN), Engine Number and Quality Certificate, used for obtaining the motorcycle driving license and motorcycle registry



1) The motorcycle Vehicle Identification Number (VIN) is printed on the vertical tube of the frame.



2) The product nameplate is riveted on the right lower part of the frame.



3) The Engine Number is printed on the left lower part of the crankcase.

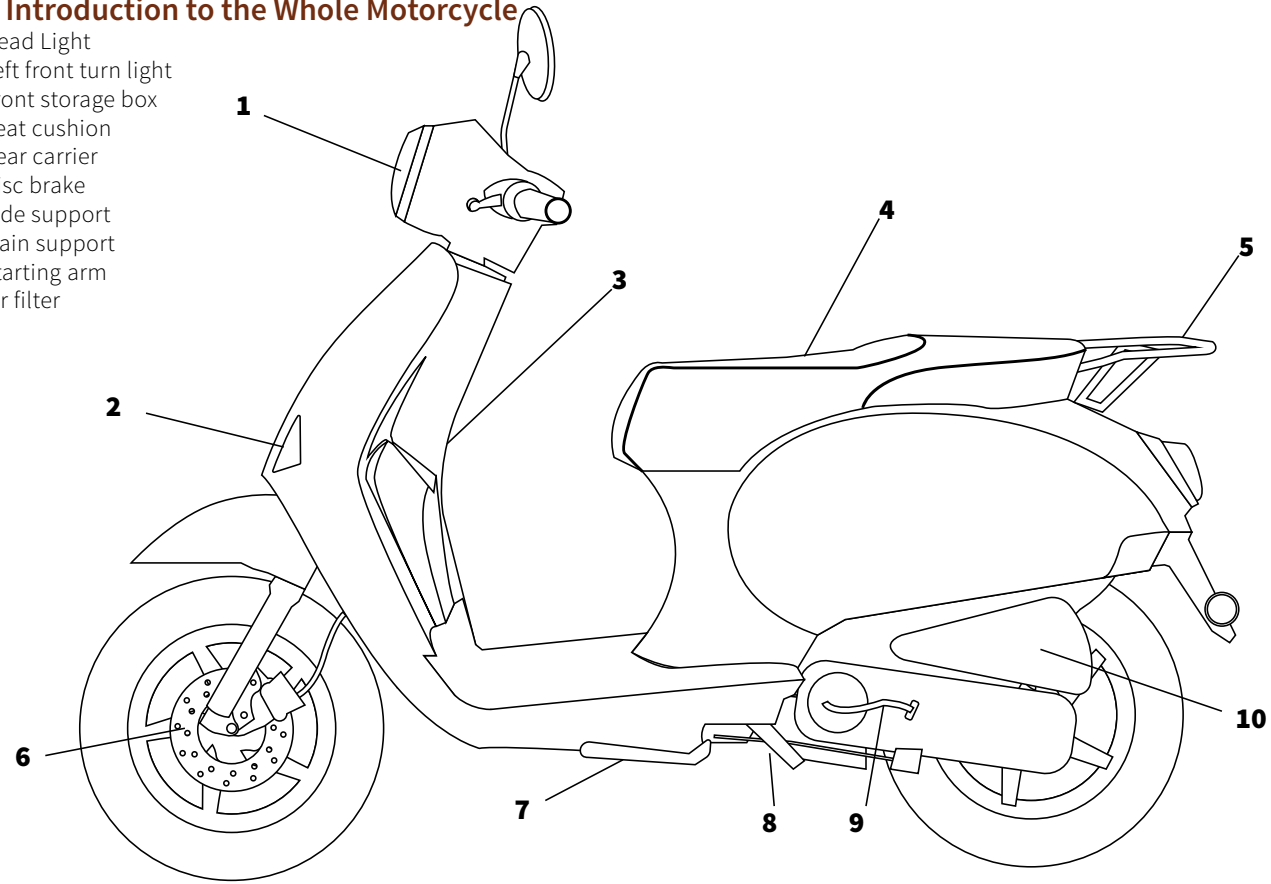
**Please fill in appropriate numbers for future reference:**

Motorcycle VIN:

Engine Number:

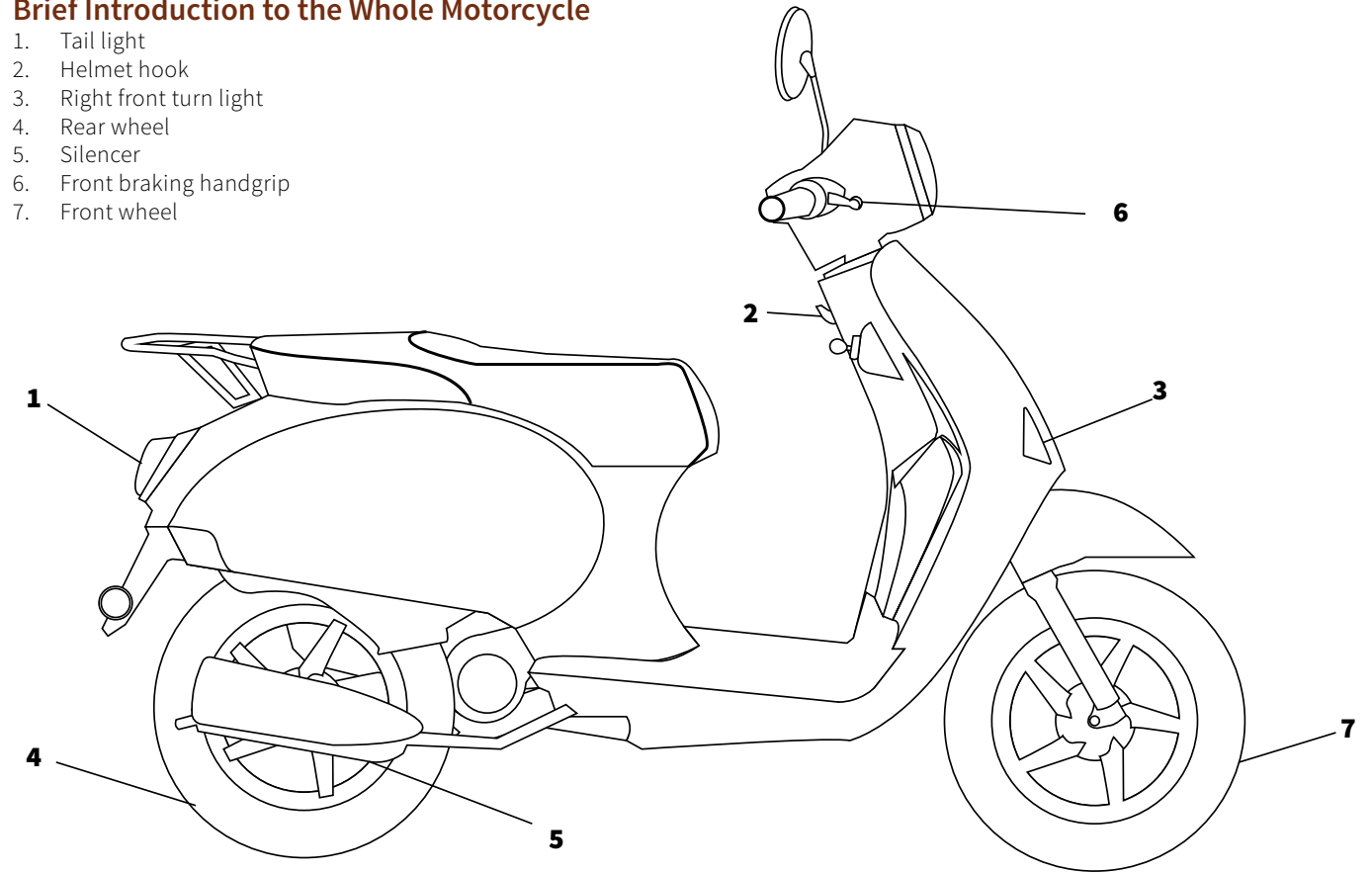
### Brief Introduction to the Whole Motorcycle

1. Head Light
2. Left front turn light
3. Front storage box
4. Seat cushion
5. Rear carrier
6. Disc brake
7. Side support
8. Main support
9. Starting arm
10. Air filter



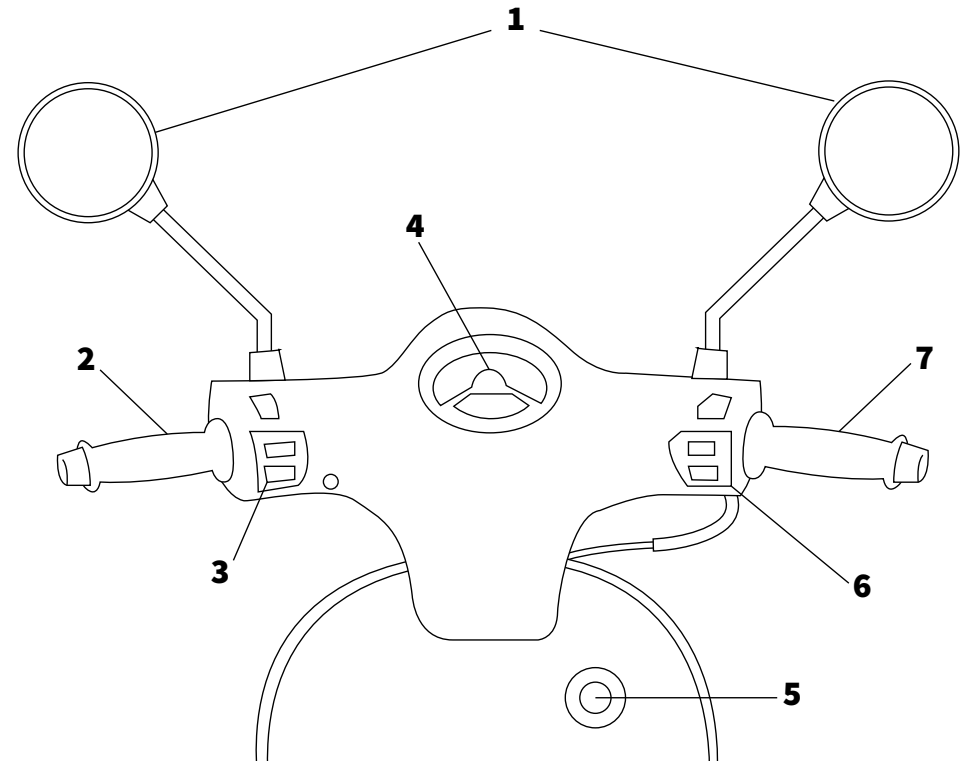
### Brief Introduction to the Whole Motorcycle

1. Tail light
2. Helmet hook
3. Right front turn light
4. Rear wheel
5. Silencer
6. Front braking handgrip
7. Front wheel



Brief Introduction to the Whole Motorcycle

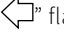
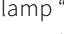

- 1. Rearview mirror
- 2. Left handgrip
- 3. Left combination switch
- 4. Instrument combination
- 5. Ignition lock switch
- 6. Right combination switch
- 7. Accelerator handgrip

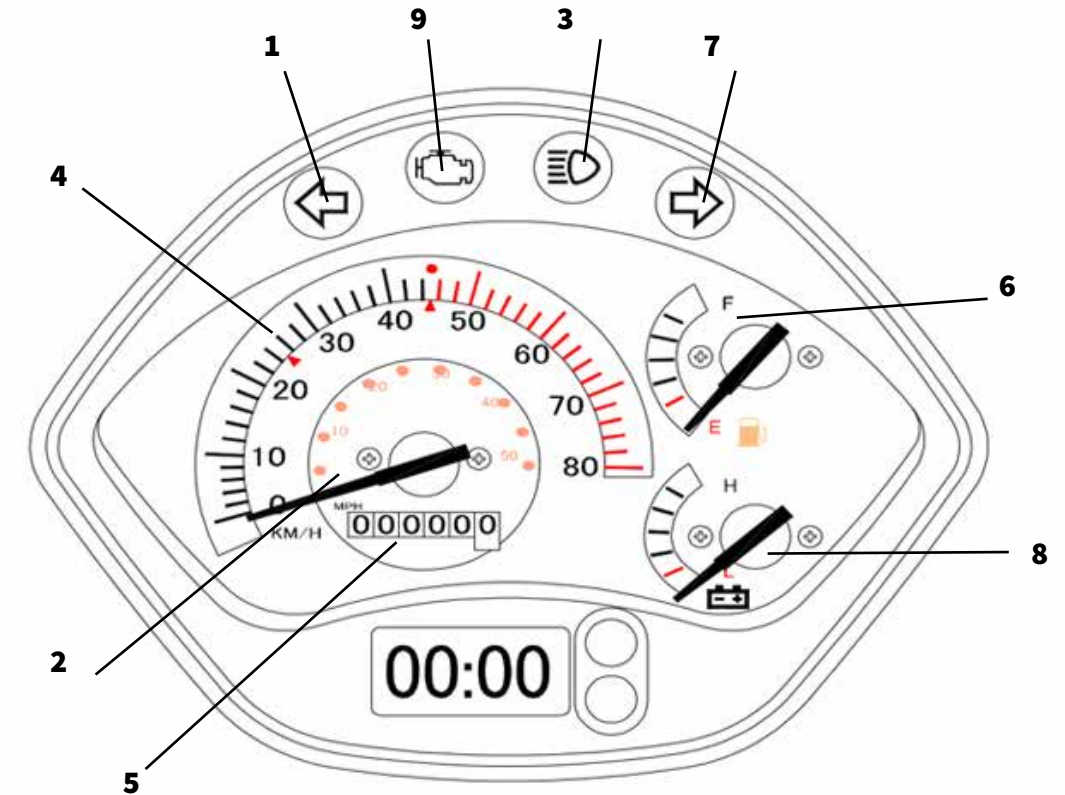


Technical Specifications and Performance Parameters






	Item	Specification
Engine	Displacement	50cc
	Engine model	BN139QMB
	Engine form	Single-cylinder, four-stroke, air-cooled
	Bore×Stoke	Ø39.0*41.5
	Working volume of cylinder	49.6mL
	Compression ratio	9.2:1
	Model of carburetter	E-Carburetor
	Air filter	Sponge filter element
	Method of lubrication	Force-feed and splash
	Startup way	Foot-stepped /electric start-up
	Maximum power/corresponding speed	25km/h 2.1kW/7500r/min    45km/h 1.8kW/6500r/min
	Maximum torque/corresponding speed	25km/h 2.8N.m/6500r/min    45km/h 2.5N.m/6500r/min
	Minimum idling stabilized speed	(1600±100)r/min
Travelling system	Economic fuel consumption	2.0L/100km
	Model of shock absorber	Hydraulic spring combined type
	Drive mode	Belt drive

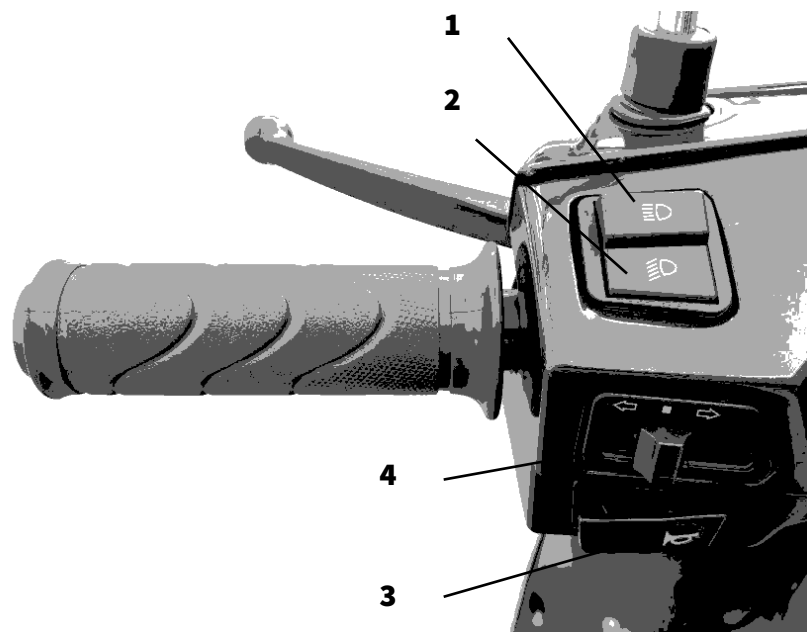
### Instrument Combination

1. Left turning indicator lamp: When the turning indicator lamp “” flashes, it indicates that “Turning signal light” is open.
2. Tachometer pointer: It indicates the current engine speed of the motorcycle.
3. High beam indicator lamp: When the high beam indicator lamp “” is on, it indicates that the “High beam lamp” is on.
4. Speedometer: It indicates the current driving speed of the motorcycle.
5. Odometer: It records the accumulative travel miles of the motorcycle.
6. Fuel gauge: It indicates how much fuel is left in the fuel tank of the motorcycle.
7. Right turning indicator lamp: When the right turning indicator lamp “” flashes, it indicates that the “Right turning signal light” is on.
8. Battery Meter: It indicates the remaining capacity of the accumulator cell of the motorcycle.
9. Trouble light: When you turn on the ignition, the lamp lights up. After starting the engine, it disappears. If your vehicle detects a failure in the system, the check engine lamp lights up. Contact a dealer to check with a diagnosis tool.






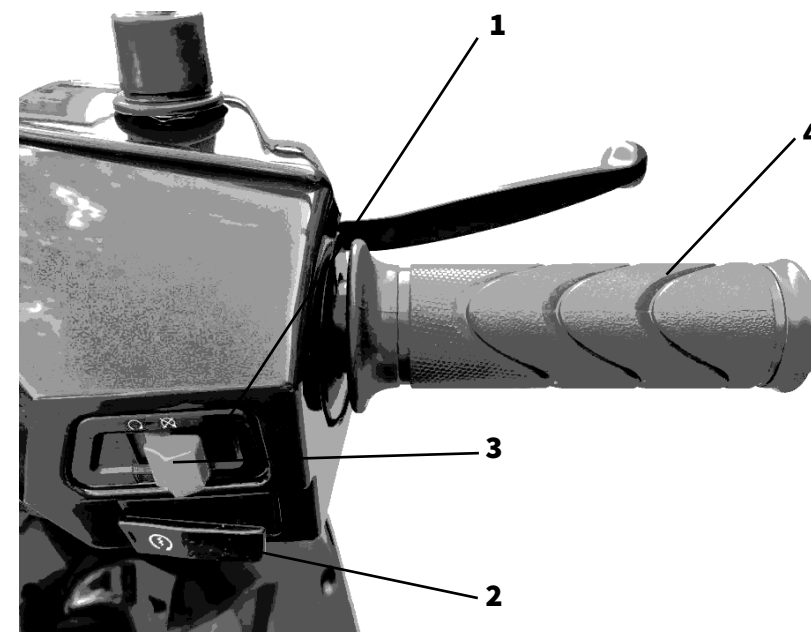
## Left combination switch

1. High beam lamp switch: When the motorcycle needs to use the “High beam lamp”, turn the lighting switch to the status “”.
2. Low beam lamp switch: When the motorcycle needs to use the “Low beam lamp”, turn the lighting switch to the position “”.
3. Horn button: When the motorcycle needs to horn, press the button “”.
4. Turning signal light switch: When the motorcycle needs to change its travelling direction, switch to “” or “” to turn left or right. When the motorcycle needs to stop turning, simply switch the turning button to the middle.




## Right combination switch

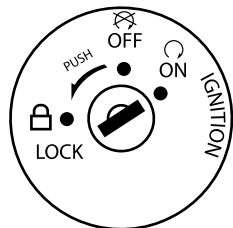
1. Double flash switch
2. Electric start button: When the motorcycle needs electric start, press the button “”
3. Engine is on “” Engine is off “”
4. Accelerator handgrip: It is mainly used to control the fuel flow rate of the carburetor.



## Ignition lock switch

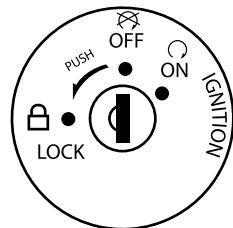
### Caution

When the motorcycle is parked, please turn the Ignition lock switch to “LOCK / ” to lock the direction lock, so as to prevent the motorcycle from being stolen.



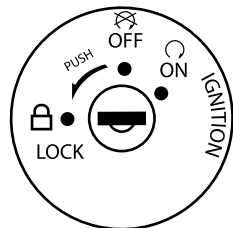
### Ignition lock On:

Turn the ignition lock key to the position “ON” to switch on the electrical system of the motorcycle. Don’t remove the motorcycle key.



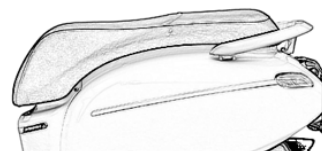
### Ignition Lock Off

Turn the ignition lock key to the position “OFF” to switch off the electrical system of the motorcycle. The motorcycle key can be removed.



### Direction lock:

Turn the steering gear left to the flameout position. Turn the ignition lock key to the position “LOCK” to lock the direction lock. Remove the ignition lock key.



### Seat cushion lock:

Seat cushion: Insert the ignition lock key into the seat cushion lock and turn it 90° clockwise to open the seat cushion.

## Fuel tank

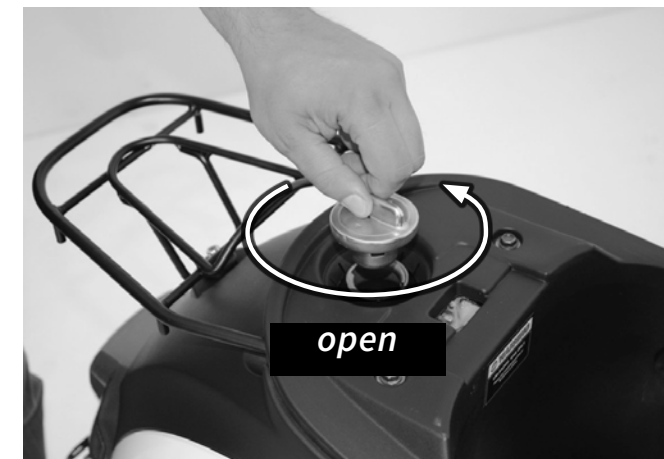
The capacity of the fuel tank is 5.5L.

Close the fuel tank cover:

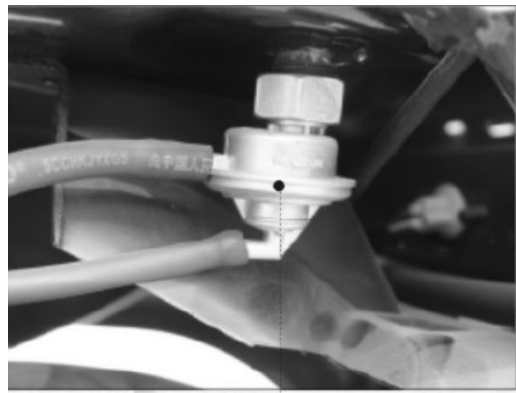
Align the convex on the fuel tank cover with the concave for fuel filing, and turn it clockwise.

Open the fuel tank cover:

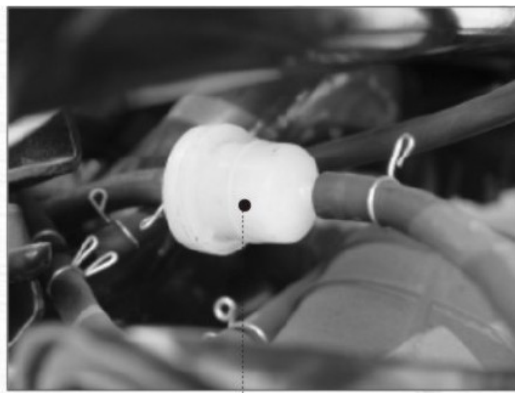
To open the fuel tank cover, turn the fuel tank cover 90° anticlockwise to remove the fuel tank cover.







Fuel tank negative pressure switch: it is opened mainly relying on the negative pressure produced by the operation of the engine, so as to make fuel enter the carburetor.



Fuel filter: fuel must be filtered through a fuel filter, to ensure that it is clean.

#### Warning

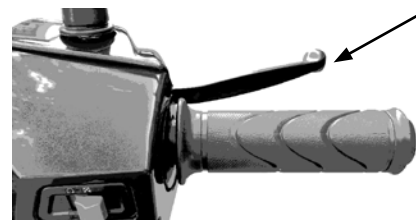
- \*Don't fill fuel to be above the neck of the fuel tank.
- \*Gasoline is flammable. The motorcycle should flame out before opening the fuel tank cover. Fuel should be filled in a ventilated place.
- \*Fuel should be filtered in filling fuel. In filling fuel, smoking should be strictly forbidden and it should not be close to any open fire.

#### Caution

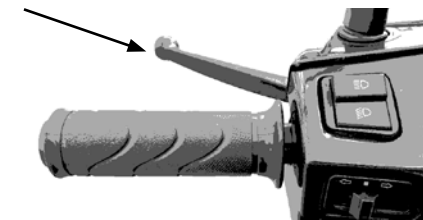
- \*Only Grade 90 or above fuel should be used.

## Maneuvering positions

This model adopts a dry-type automatic centrifugal clutch, namely automatic clutch, stepless speed change plus constant mesh. If any slip or incomplete separation occurs to the stepless speed change of the automatic clutch, please repair it in a designated after-sales service center or in a professional maintenance station.



Front braking handgrip: controls the running speed of the front wheel of the motorcycle.



Rear braking handgrip: controls the running speed of the rear wheel of the motorcycle.



Automatic clutch: automatically controls the separating/meshing of the clutch based on the running speed of the motorcycle.



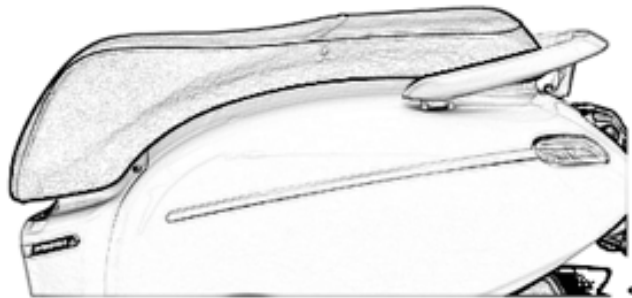
Starting arm: used for foot-stepped startup of the motorcycle



## Motorcycle Load

The required load of the motorcycle must be strictly observed. Otherwise, the safety and stability of the motorcycle may be affected.

- \* Articles in the rear storage box must be securely fixed.
- \* It is strictly forbidden to hang anything on the steering gear.
- \* The load of the rear carrier must not exceed 5kg.
- \* The load of the rear storage box should not exceed 5kg.
- \* The maximum payload of motorcycles is 150kg, and the maximum payload of mopeds is 75kg.



## Tools delivered together with the motorcycle

Common service and maintenance tools are delivered together with the Motorcycle.

8×10 Double-ended spanner  
Double-ended screw driver holder



## Check before and after running

In order to ensure good working performance of the motorcycle, please conduct service and maintenance mainly by checking, adjusting and cleaning the Motorcycle before, during and after the running of the motorcycle.

1. After cleaning the Motorcycle, start the engine and make it run at idle for several minutes.
2. Check whether there is any fuel/oil/gas leakage.
3. Check whether there is any loose connection.

Different levels of maintenance and service will be taken for different odometer readings and performance conditions of the motorcycle:

### **Level 1 Service and Maintenance: Odometer reading**

**1000km~2000km**, the service and maintenance is dominated by lubricating and fastening.

### **Level 2 Service and Maintenance: Odometer reading**

**3000km~6000km**, the service and maintenance is dominated by checking and adjusting.

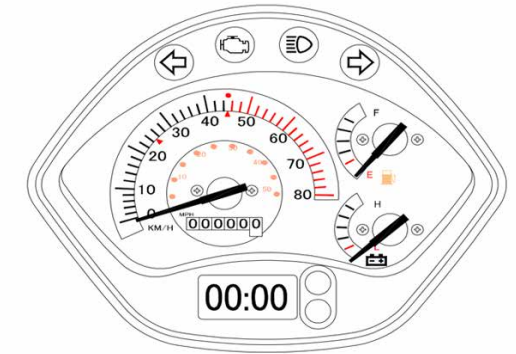
### **Level 3 Service and Maintenance: Odometer reading**

**6000km~10000km**, the service and maintenance is dominated by disassembling, disassembly inspection and removing hidden hazards.

Before running the motorcycle, please follow the following steps to check it, so as to ensure good performance of the motorcycle and your driving safety.

\* Start the ignition lock switch to check whether each indicator lamp of instrument works properly

\* Observe the fuel gauge to see whether the remaining fuel is enough.



## Check before running

Open the fuel tank cover, and add fuel according to the actual travel miles.

Level the motorcycle and check the oil gauge to see whether the oil level is between the upper and lower markings.

Check the flexibility and stability of the steering gear.

Check whether the acceleration handgrip turns flexibility. If not, it is necessary to clean the accelerator or change the steel cable.

Check whether the clutch separates or meshes properly.

Check whether the connection of the accumulator cell is loose.

Check the air pressure of the front tire and the wear of the tire casing.

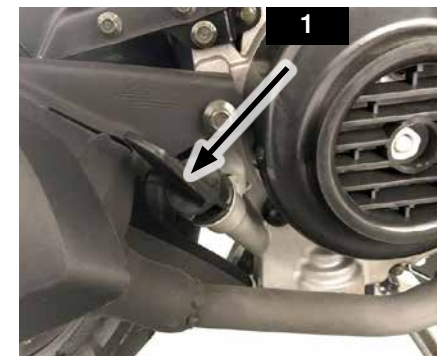
Check the air pressure of the rear tire and the wear of the tire casing.

Check whether the free travel of the front braking handgrip meets the standard 10mm-20mm.

Check whether the free travel of the rear braking handgrip meets the standard 10mm-20mm.

Check whether the head light, turning lights and indicator lamps work properly.

Check whether the tail light and braking lights work properly.



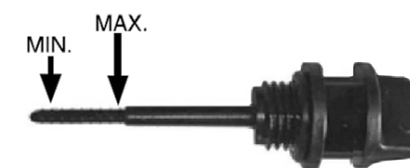
## Checking the oil level

### CAUTION

Checking the oil while the engine is cold will lead to a wrong measurement and therefore the wrong oil quantity. In order to avoid engine damage, never exceed the maximum oil level nor let it drop below the minimum level.

### NOTE

Make sure that the scooter during oil-level checks stands level in all respects. Even the slightest inclination towards the side will produce measurement errors.



- Stop the warmed-up engine, wait for approx. 5 minutes and hold the scooter upright.
- Propping up the scooter on the parking stand.
- Stop the engine and remove the oil filler cap (1) on the lower right of the crankcase.
- Clean the oil filler cap at the MIN-MAX area with a clean rag.

### CAUTION

For checking the oil level only insert the oil filler cap and don't screw in! Otherwise there will be a wrong measurement in order to avoid engine damage.



- The oil level must be between the minimum and maximum marks.
- Tighten the oil filler cap by hand.

If required, replenish the engine oil SAE 15 W/40 via the oil level up to the MAX level mark.

- When change new engine oil, open the oil hole screw (2), till all engine oil is flow out, then tighten the screw (2) and add new oil via the oil level up to the MAX. level mark.
- Tighten the oil filler cap (1).

### Operation of foot-stepped startup

The foot-stepped startup of the motorcycle is done in the following steps:

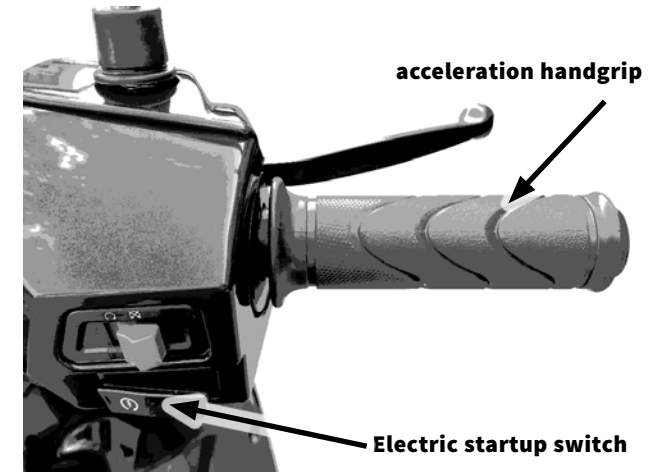
1. Start the ignition lock to check whether indicator lamps of instruments of the motorcycle work properly.
2. Hold the front braking handgrip to prevent the slipping of the motorcycle.
3. Step down the starting arm to its limit, and then reset the starting arm in time. The starting arm must be reset in time after the startup of the motorcycle.
4. Turn the acceleration handgrip slightly with your right hand to add an appropriate amount of fuel to start up the motorcycle. The motorcycle can be run only after it is pre-heated.






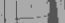

### Operation of Electric Startup

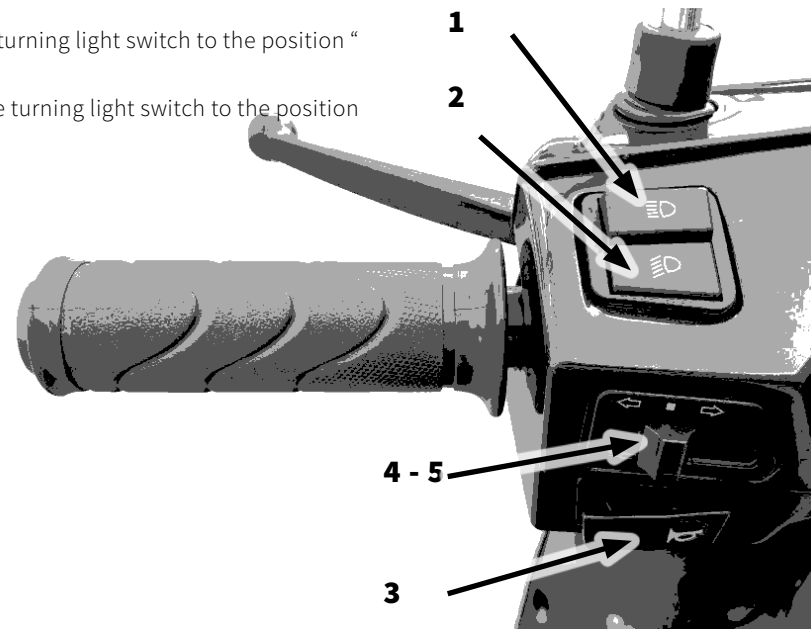
The duration of each electric startup should not exceed 5s, and each interval between two electric startups should not be shorter than 10s. If 3 startup attempts fail consecutively, the motorcycle must be checked.

1. First, insert the key into the ignition switch lock, and turn it to the position "O".
2. Hold the front braking handgrip, turn on the electric startup switch and perform electric startup.
3. Or hold the rear braking handgrip, turn on the electric startup switch and perform electric startup.
4. Push the electric startup button with your right thumb, and meanwhile turn the acceleration handgrip slightly with your right hand to add an appropriate amount of fuel.


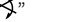



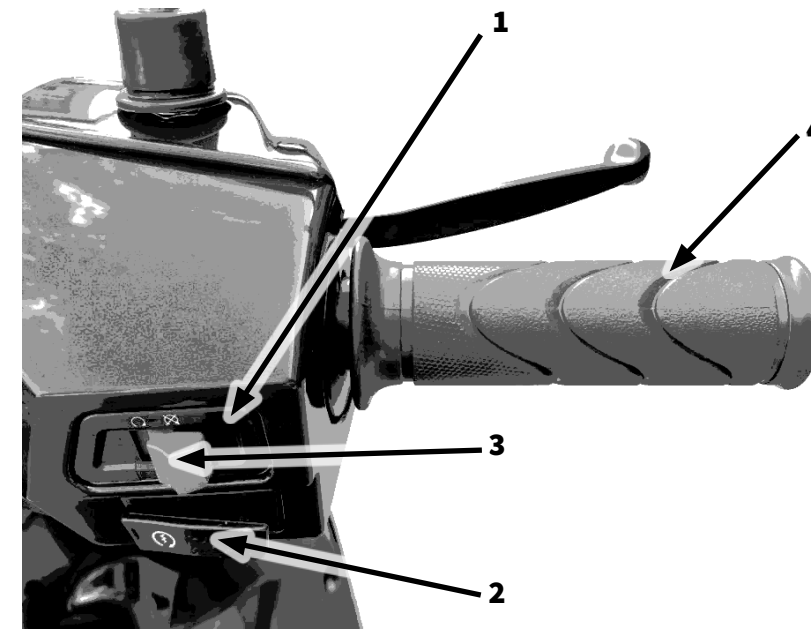
## Operation of Left Combination Switch

1. When the motorcycle runs at night and needs to see clearly a target in the distance, turn the lighting switch to the position “”, and the High beam lamp begins to work.
2. When the motorcycle runs at night and meets another vehicle, in order to ensure the safety of both parties, turn the lighting switch to the position “” and the low beam lamp begins to work.
3. When the motorcycle needs to overtake another vehicle or warn pedestrians, push down the Horn button “” to warn them.
4. When the motorcycle needs to turn left, turn the turning light switch to the position “”, and the left turning light begins to work.
5. When the motorcycle needs to turn right, turn the turning light switch to the position “”, and the right turning light begins to work.



## Right combination switch

1. Double flash switch
2. Electric start button: When the motorcycle needs electric start, press the button “”
3. Engine is on “” Engine is off “”
4. Accelerator handgrip: It is mainly used to control the fuel flow rate of the carburetor.




## Parking of the Motorcycle

When the motorcycle needs to be parked temporarily, it should be parked in a relatively safe place. Please pay attention to the following points in parking the motorcycle:

Turn on the right turning light to warn surrounding vehicles and pedestrians.


Hold the rear braking handgrip to reduce the speed of the rear wheel.

At the same time, hold the front braking handgrip to reduce the speed of the front wheel.

Turn the ignition lock key to the position “” to shut off the ignition system and stop the motorcycle.

After parking the motorcycle, put up the side support as shown in the figure. The front wheel of the motorcycle must be towards an uphill direction so as to prevent the slipping of the motorcycle.

Then put up the main support. At the same time, the front wheel of the motorcycle must be towards an uphill direction so as to prevent the slipping of the motorcycle.

Turn the ignition lock switch to the position “” to prevent the motorcycle from being stolen.

### Caution

After parking the motorcycle, the direction lock should be locked and the ignition lock key should be removed, so as to prevent the motorcycle from being stolen.



side support



main support



MOOOF NV  
RIJKSWEWEG 440  
8710 WIELSBEKE  
BELGIQUE  
[www.neco.be](http://www.neco.be)

